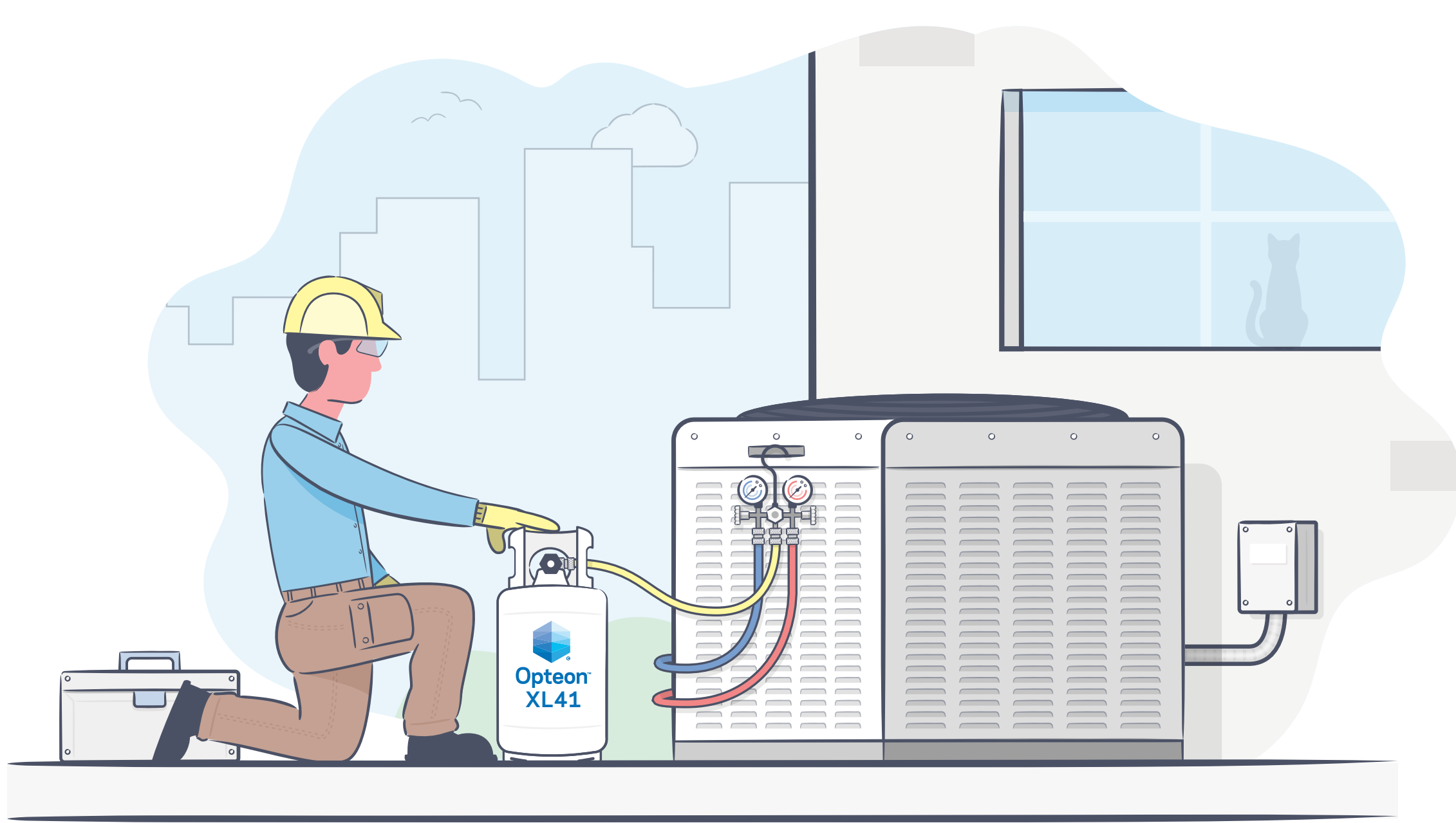


# The Clear Future of HVAC Refrigerants.

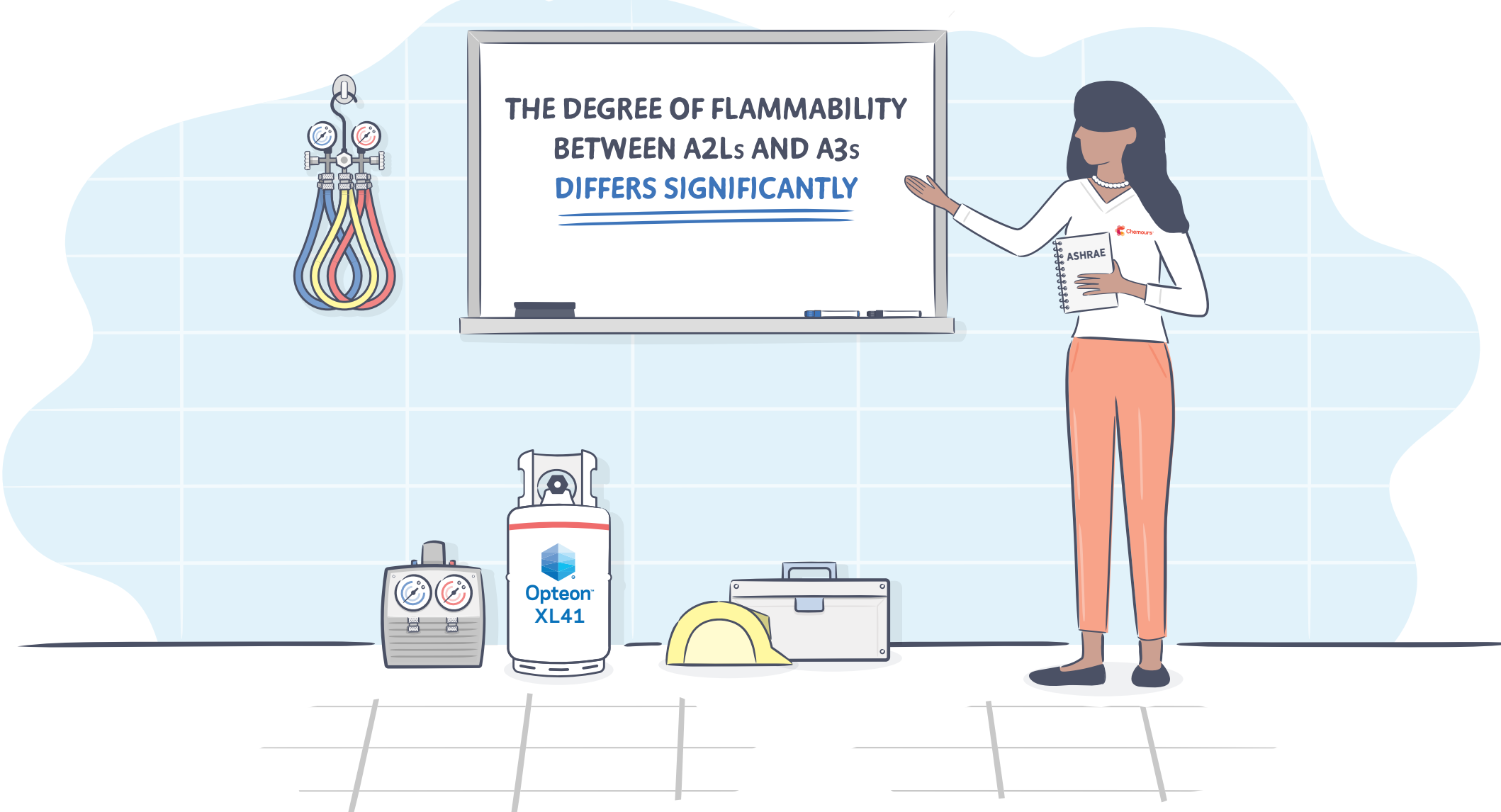
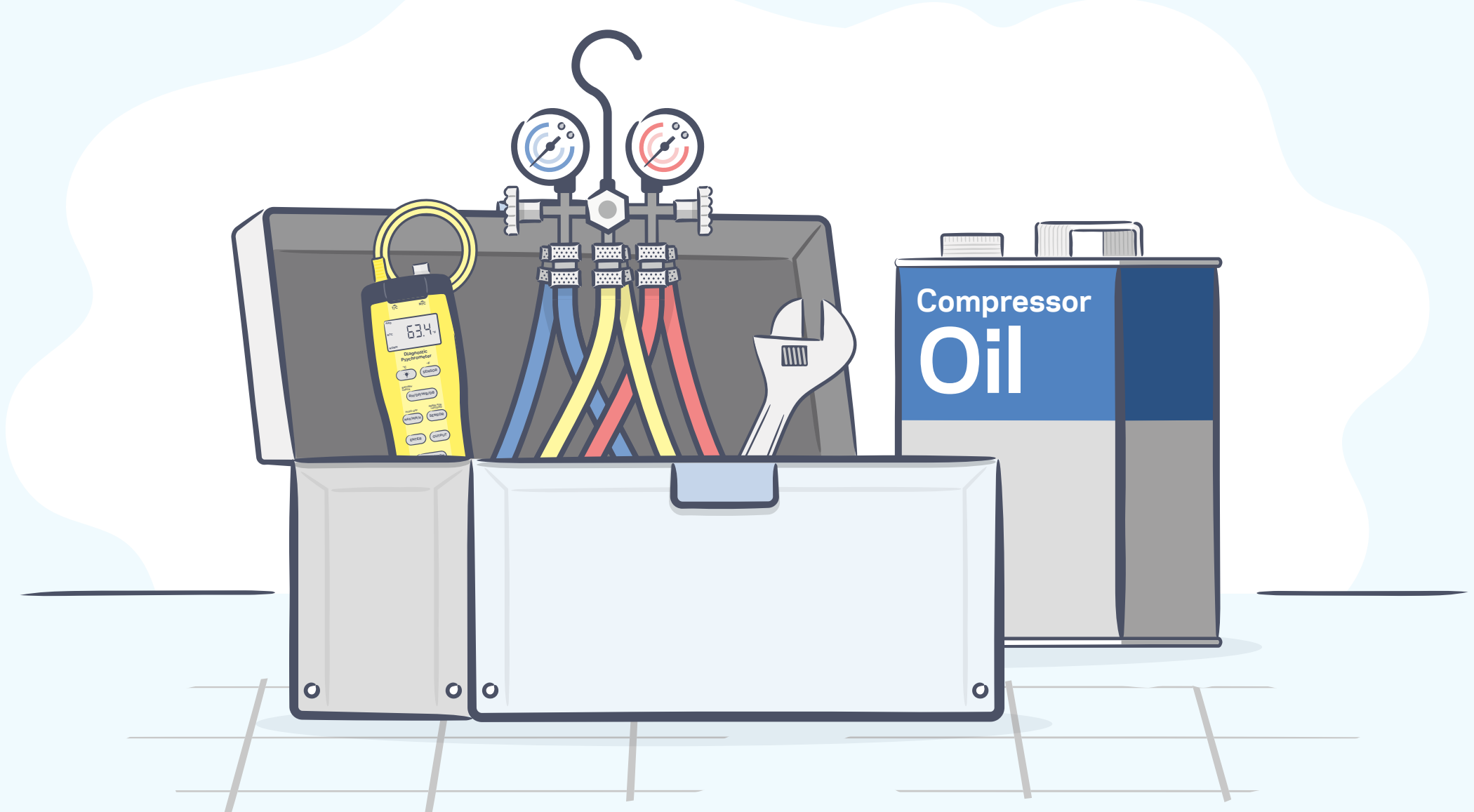


## 1 It Feels Like You're Working With R-410A.

To a service technician, the look and feel of Opteon™ XL41 systems would be similar to those of R-410A. That's because XL41 is a very close performance match to R-410A. Overall, installation and service procedures will be similar. The same types of best practices in use today with R-410A can be used with Opteon™ XL41.

## 2 No Need to Replace Your Entire Tool Set.

Many of the existing tools in use with R-410A will still be suitable for Opteon™ XL41 systems as technicians can expect to see similar operating pressures and temperatures with XL41. Lubricants commonly used with R-410A can be compatible with XL41 due to similar miscibility and viscosity between R-410A and XL41. Additionally, R-410A and XL41 are both lower glide blends, so similar charging techniques can be used for both refrigerants.

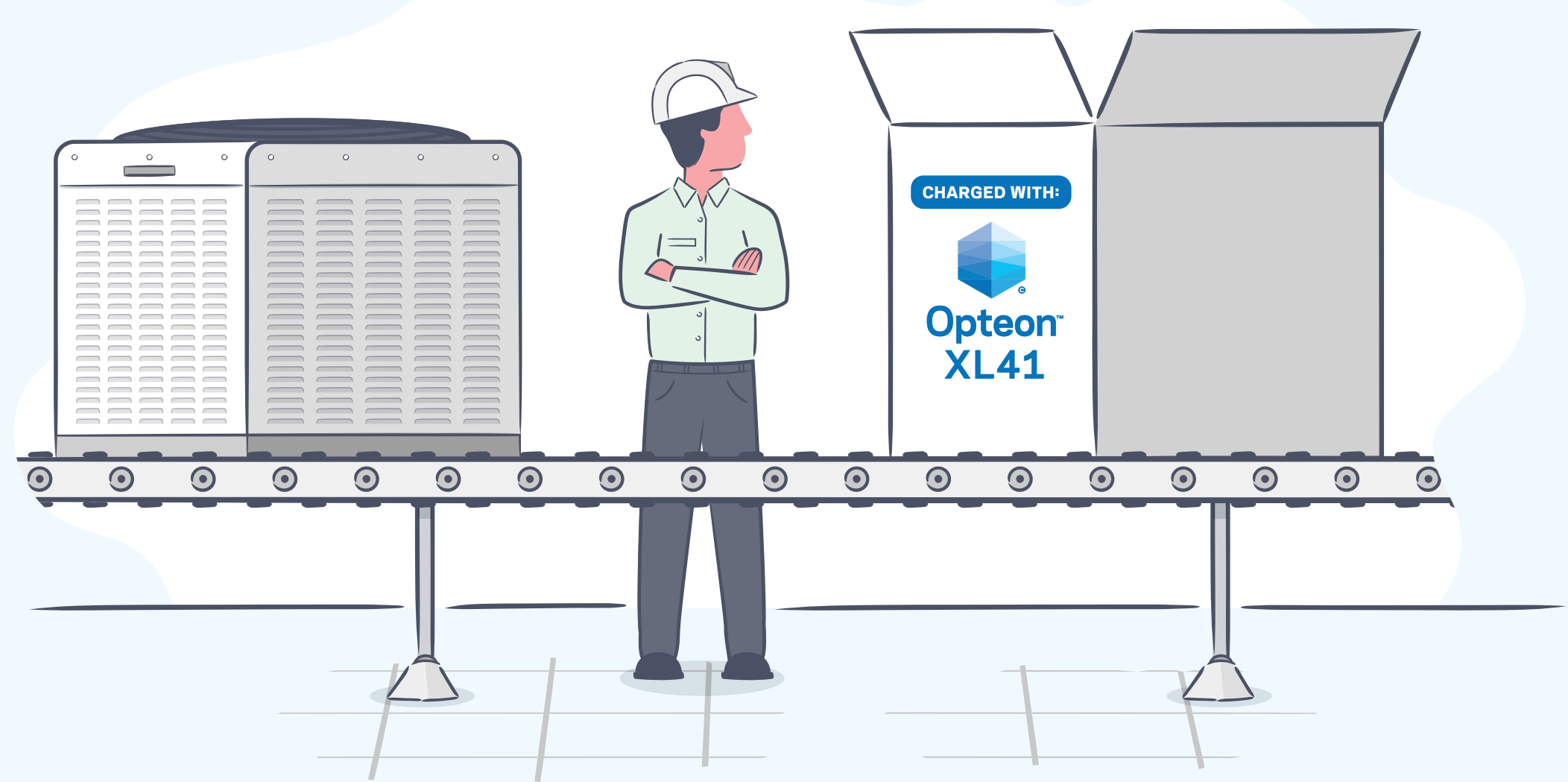


## 3 Harder to Ignite. Easy to Learn.

The degree of flammability between A2Ls and A3s differs significantly. A2Ls, such as Opteon™ XL41, are less likely to form flammable concentrations in the air than A3 refrigerants, making them inherently safer to use. The minimum ignition energy of an A2L is much higher than that of an A3. In fact, many common electrical components used today in the HVAC industry can't ignite A2Ls.

## 4 Coming to a Condenser Near You.

New equipment filled with XL41 will start rolling off assembly lines by 2025. OEM system design changes required for XL41 will be minimal. That means the installation and service procedures for XL41 systems will be similar to those of R-410A. Chemours is proud to offer training on how to work with Opteon™ XL41 so you can be ready for the next big transition in the HVAC industry.



FOR CONTRACTORS AND TECHNICIANS

## Opteon™ XL41 (R-454B)



Technical support for ongoing guidance



Archive of training and guidance



Designed to use best practices in use today with R-410A



Adopted by industry leading OEMs



Easily accessible on a regional and global scale



Chemours Brand Assurance Anti-Counterfeiting Program

## Learn More About Opteon™ XL41

Connect with experts to learn more about Opteon™ products and to find the right solution for your needs.

Contact Us

